

FOR SALE OR GROUND LEASE

ONE (1) ACRE SITE

SEC ROUTE 34 & WOLF CROSSING ROAD

Oswego, IL



ZONED B3

Commercial Service
Wholesale District

PROPERTY INDEX NUMBER:
0317282001

DAILY COMBINED TRAFFIC:
26,000+ VPD

SPACE HIGHLIGHTS

- 7,967 SF existing building for retail or complete redevelopment
- Located on a heavily trafficked, lighted intersection with multiple means of access

For more information, please contact:

JAMES SCHUTTER
Senior Managing Director
jschutter@ngkf.com
312.224.3210

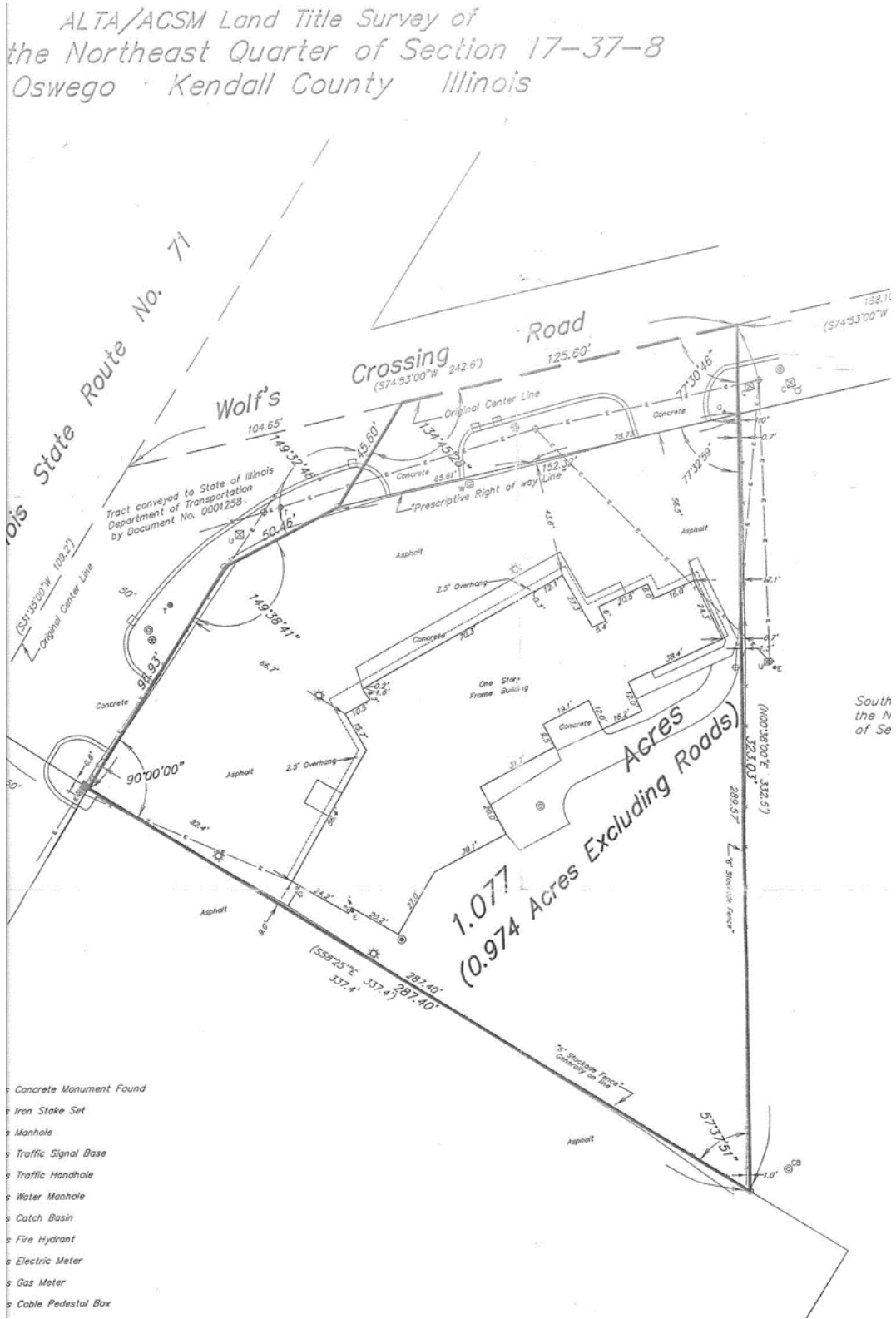
500 West Monroe Street
Suite 2900
Chicago, IL 60661
ngkf.com



Procuring broker shall only be entitled to a commission, calculated in accordance with the rates approved by our principal only if such procuring broker executes a brokerage agreement acceptable to us and our principal and the conditions as set forth in the brokerage agreement are fully and unconditionally satisfied. Although all information furnished regarding property for sale, rental, or financing is from sources deemed reliable, such information has not been verified and no express representation is made nor is any to be implied as to the accuracy thereof and it is submitted subject to errors, omissions, change of price, rental or other conditions, prior sale, lease or financing, or withdrawal without notice and to any special conditions imposed by our principal.

SEC ROUTE 34 & WOLF CROSSING ROAD

Oswego, IL



For more information, please contact:

JAMES SCHUTTER
Senior Managing Director
jschutter@ngkf.com
312.224.3210

500 West Monroe Street
Suite 2900
Chicago, IL 60661
ngkf.com

SEC ROUTE 34 & WOLF CROSSING ROAD

Oswego, IL



For more information, please contact:

JAMES SCHUTTER
Senior Managing Director
jschutter@ngkf.com
312.224.3210

500 West Monroe Street
Suite 2900
Chicago, IL 60661
ngkf.com