

FOR SALE

± 14 ACRES OF LAND

WILSON ROAD

4045 & 4119 WILSON ROAD

Humble, TX 77396



PROPERTY FEATURES

Perfect for Residential Development

- + ± 14 Acres of land with an additional 36 acres available
- + Wilson Road widening complete
- + Utilities to the road
- + Will require detention
- + New single family residential adjacent to property
- + Park Lakes Elementry School across Wilson Road
- + Humble ISD Schools
- + \$3,050,000 (5.00 PSF)



CONTACT US

ALEX MAKRIS

+1 713 577 1827
alex.makris@cbre.com

JEFF PITTMAN

+1 713 305 9289
jeff.pittman@cbre.com

CHRIS CARVER

KW Woodlands
+1 713 206 9191
carver34@yahoo.com

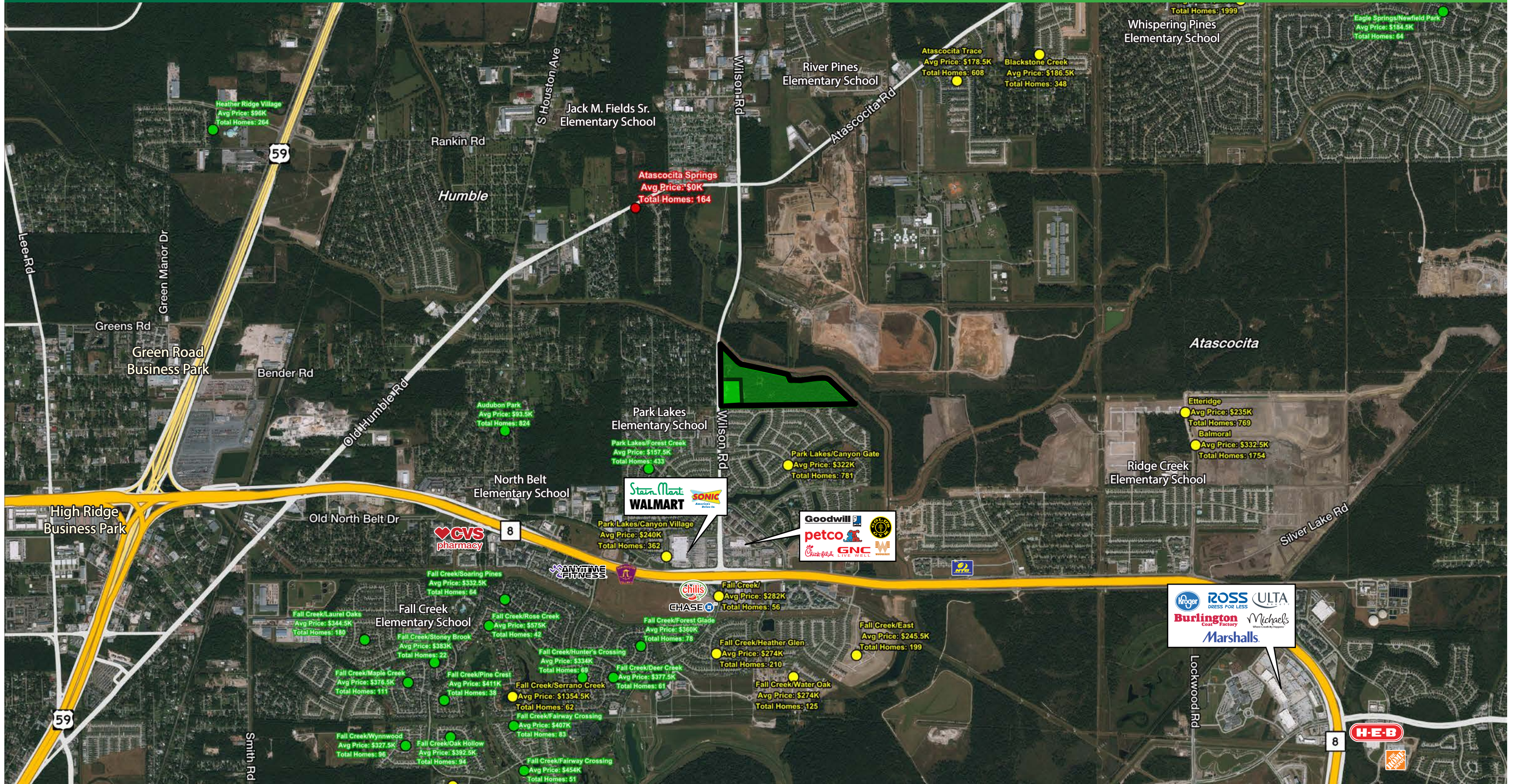


www.cbre.com

CBRE

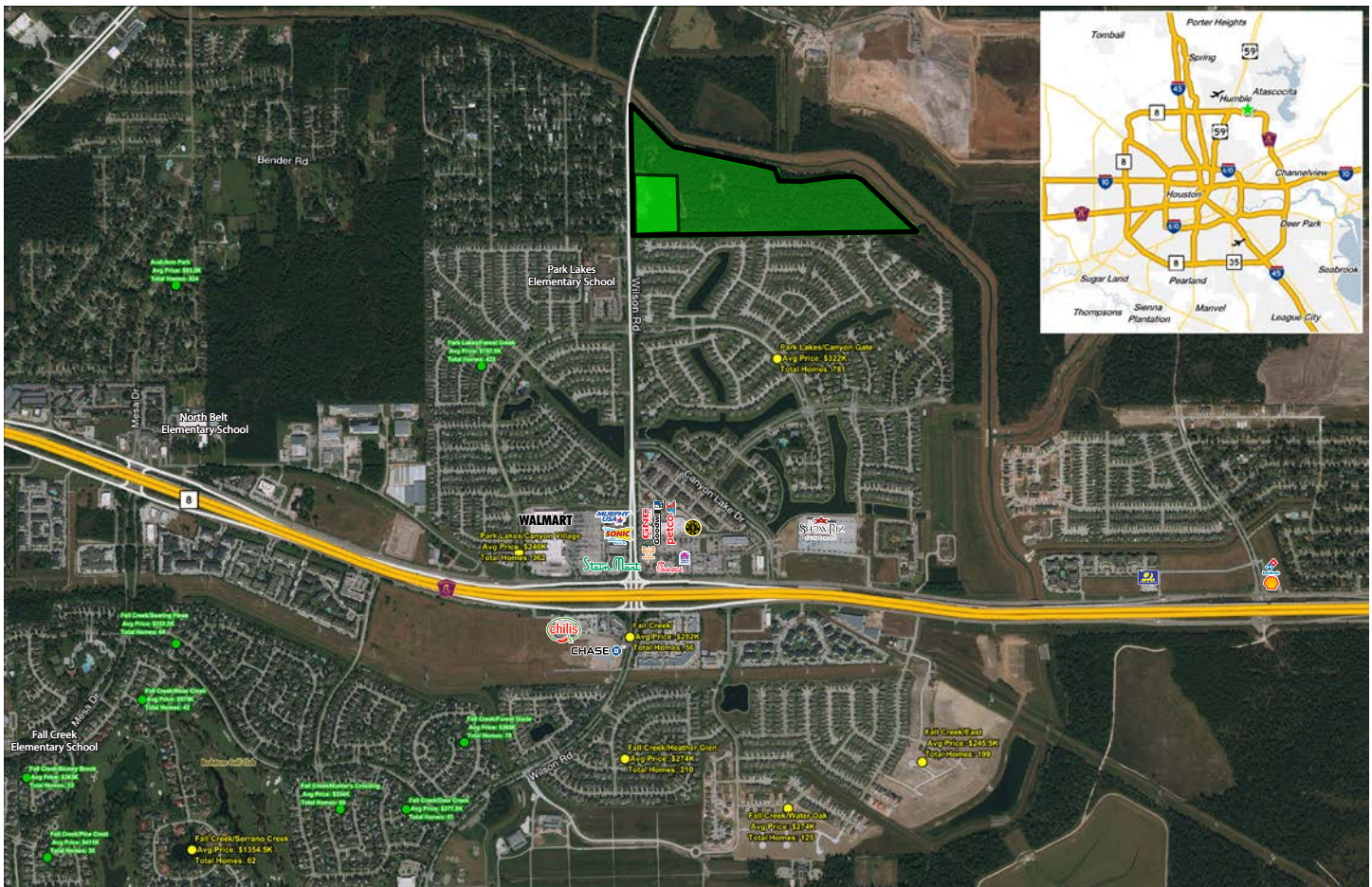
FOR SALE
± 14 ACRES OF LAND

WILSON ROAD
4045 & 4119 WILSON ROAD
Humble, TX 77396



FOR SALE ±14 ACRES OF LAND

WILSON ROAD 4045 & 4119 WILSON ROAD Humble, TX 77396



DEMOGRAPHICS

2019 DEMOGRAPHICS	1 MILE	3 MILES	5 MILES
Population	11,398	61,565	129,410
Average HH Income	\$79,493	\$89,407	\$90,370

TRAFFIC COUNTS

2018 TRAFFIC COUNTS	CPD
Wilson Road @ Beltway 8	23,263
Wilson Road @ Greens Road	16,915

© 2019 CBRE, Inc. This information has been obtained from sources believed reliable. We have not verified it and make no guarantee, warranty or representation about it. Any projections, opinions, assumptions or estimates used are for example only and do not represent the current or future performance of the property. You and your advisors should conduct a careful, independent investigation of the property to determine to your satisfaction the suitability of the property for your needs. Photos herein are the property of their respective owners and use of these images without the express written consent of the owner is prohibited. CBRE and the CBRE logo are service marks of CBRE, Inc. and/or its affiliated or related companies in the United States and other countries. All other marks displayed on this document are the property of their respective owners.

FOR SALE
± 14 ACRES OF LAND

WILSON ROAD
4045 & 4119 WILSON ROAD
Humble, TX 77396



© 2018 CBRE, Inc. This information has been obtained from sources believed reliable. We have not verified it and make no guarantee, warranty or representation about it. Any projections, opinions, assumptions or estimates used are for example only and do not represent the current or future performance of the property. You and your advisors should conduct a careful, independent investigation of the property to determine to your satisfaction the suitability of the property for your needs. Photos herein are the property of their respective owners and use of these images without the express written consent of the owner is prohibited. CBRE and the CBRE logo are service marks of CBRE, Inc. and/or its affiliated or related companies in the United States and other countries. All other marks displayed on this document are the property of their respective owners.

www.cbre.com

CBRE

FOR SALE WILL SUBDIVIDE
± 14 ACRES OF LAND

WILSON ROAD
4045 & 4119 WILSON ROAD
Humble, TX 77396



CONTACT US

ALEX MAKRIS

+1 713 577 1827
alex.makris@cbre.com

JEFF PITTMAN

+1 713 305 9289
jeff.pittman@cbre.com

CHRIS CARVER

KW Woodlands
+1 713 206 9191
carver34@yahoo.com



© 2019 CBRE, Inc. This information has been obtained from sources believed reliable. We have not verified it and make no guarantee, warranty or representation about it. Any projections, opinions, assumptions or estimates used are for example only and do not represent the current or future performance of the property. You and your advisors should conduct a careful, independent investigation of the property to determine to your satisfaction the suitability of the property for your needs. Photos herein are the property of their respective owners and use of these images without the express written consent of the owner is prohibited. CBRE and the CBRE logo are service marks of CBRE, Inc. and/or its affiliated or related companies in the United States and other countries. All other marks displayed on this document are the property of their respective owners.

www.cbre.com

CBRE