

NINETY7FIFTY ON THE PARK

9750 CRESCENT PARK CIRCLE | ORLAND PARK, IL



UP TO 4,200 SF OF PREMIER RETAIL SPACE AVAILABLE IN THE HEART OF ORLAND PARK



James Schutter 312.224.3210 jschutter@ngkf.com

500 West Monroe Street, Suite 2900,
Chicago, IL 60661

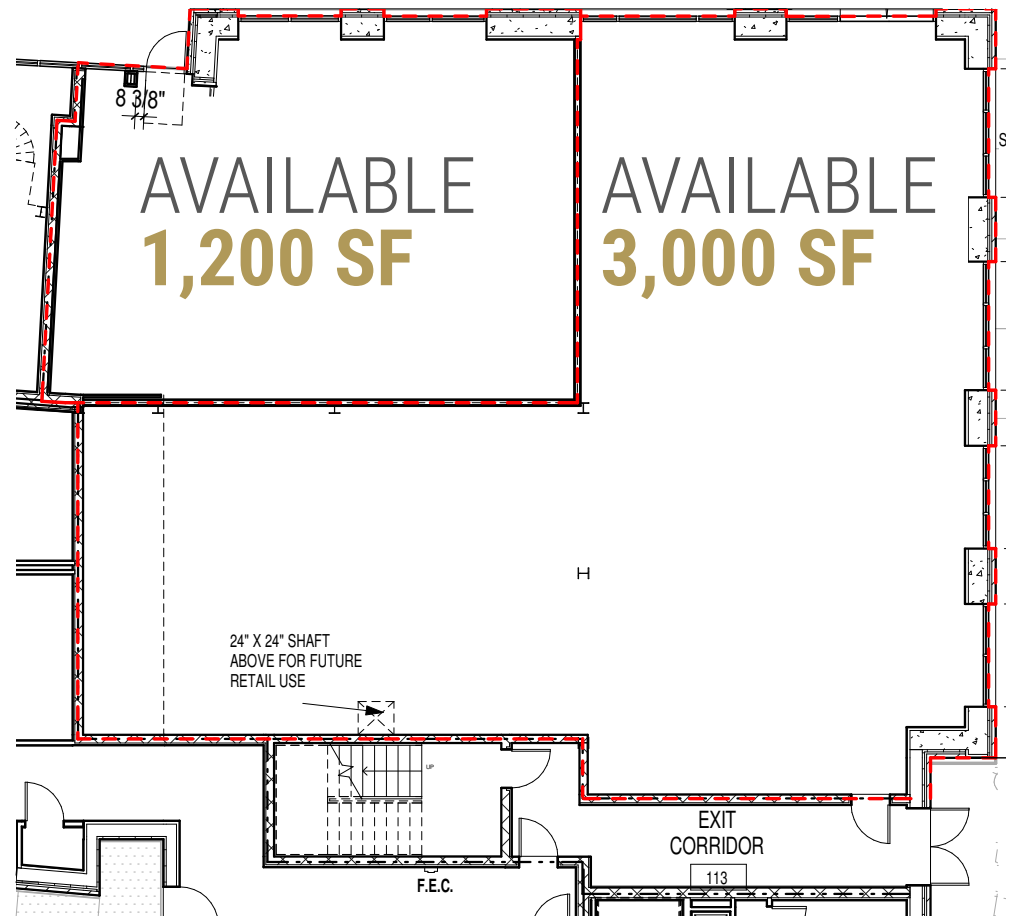
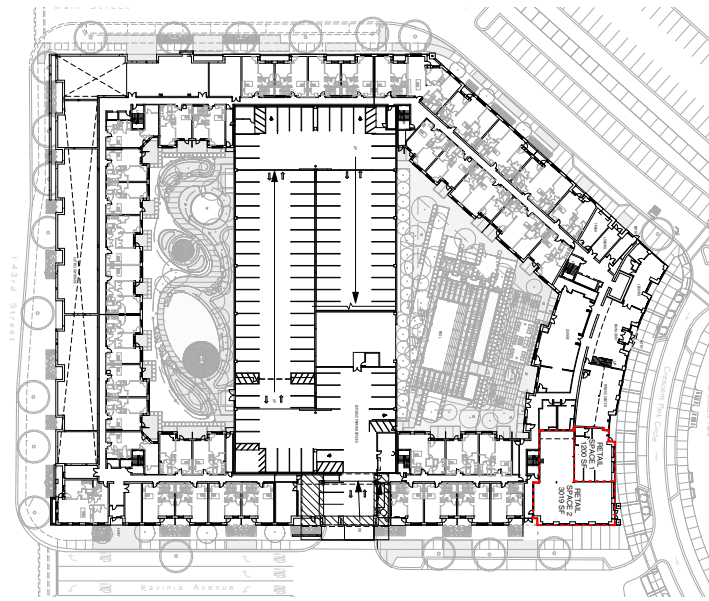
Procuring broker shall only be entitled to a commission, calculated in accordance with the rates approved by our principal only if such procuring broker executes a brokerage agreement acceptable to us and our principal and the conditions as set forth in the brokerage agreement are fully and unconditionally satisfied. Although all information furnished regarding property for sale, rental, or financing is from sources deemed reliable, such information has not been verified and no express representation is made nor is any to be implied as to the accuracy thereof and it is submitted subject to errors, omissions, change of price, rental or other conditions, prior sale, lease or financing, or withdrawal without notice and to any special conditions imposed by our principal.

PROPERTY FEATURES

- **Ninety7Fifty on the Park** is a premium, suburban mixed-use development situated directly in the heart of Orland Park's new downtown
- Adjacent to 143rd Street Metra Train Station (2.5 million riders per year), Crescent Park and University of Chicago Hospital Development
- Full amenity rental building with 295 upscale apartments
- Beautiful ground floor end-cap retail space with ceiling to floor windows
- Heavy daytime traffic with 42,300 cpd on LaGrange Road and 21,200 cpd on 143rd Street



James Schutter 312.224.3210 Jschutter@ngkf.com



AREA DEMOGRAPHICS

	3 MILE	5 MILE	7 MILE
Residential Population	59,926	155,241	310,670
Daytime Population	58,797	136,380	287,609
Median HH Income	\$89,530	\$87,940	\$78,325
Median Age	45.6	45.3	42.6



James Schutter 312.224.3210 Jschutter@ngkf.com

