

# 4230 NACO PERRIN BOULEVARD

SAN ANTONIO, TX | PERRIN BEITEL AND NACO PERRIN BOULEVARD



AVAILABILITY: 5,116 SF

LEASE TYPE: SUBLEASE

EXPIRATION: 05/31/2023

LEASE RATES: \$8.00 PSF + RET  
[EST. AT \$2.54 PSF]

- Freestanding building—retail, service, office, flex industrial
- Zoning: C-2 Commerical District [Sec. 35-310.08]

AREA RETAILERS:



Advance  
Auto Parts

Firestone



MAJOR ANCHORS:



WAL★MART®

## DEMOGRAPHICS:

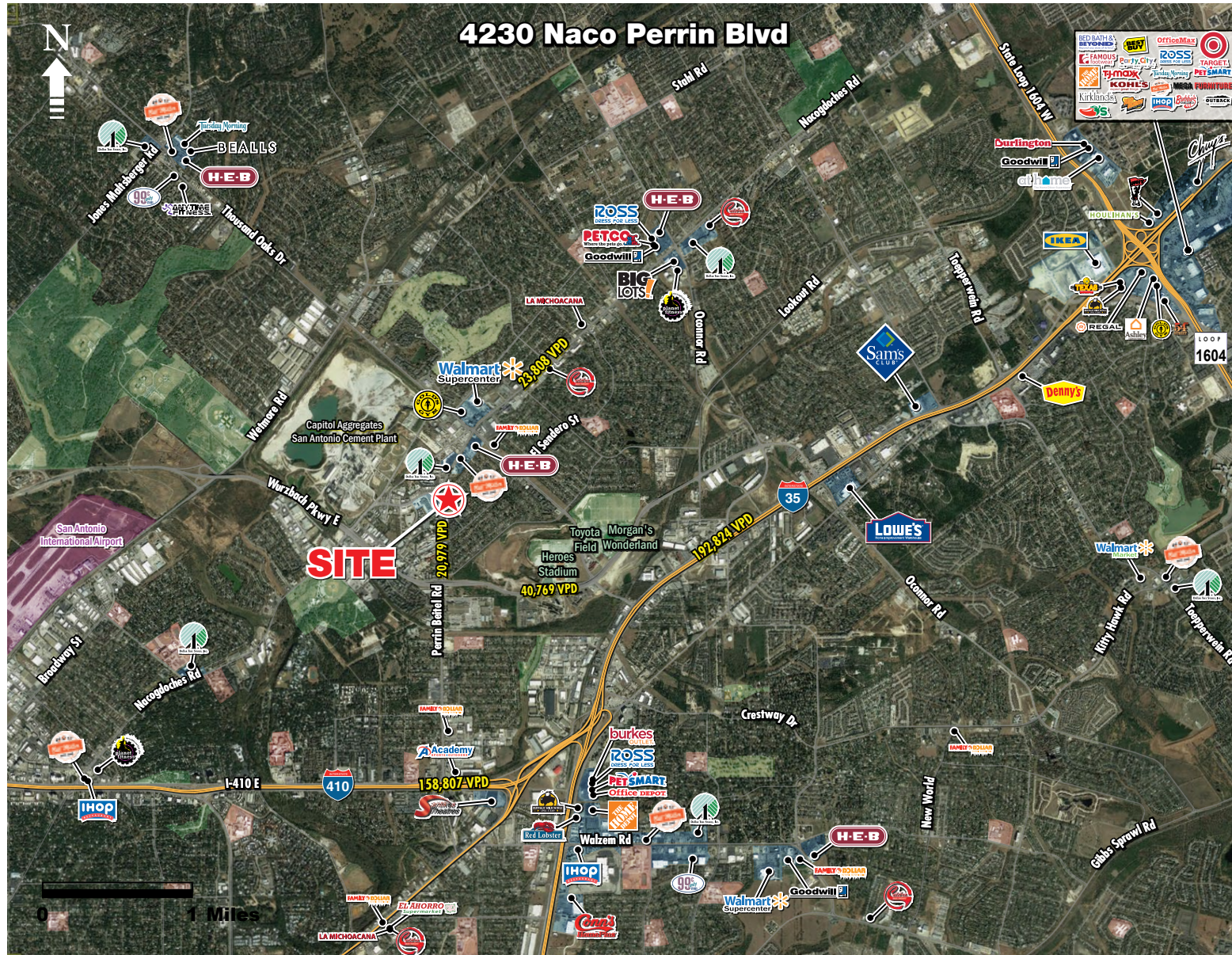
	1 MILE	3 MILE	5 MILE
2018 Population	9,737	98,690	264,037
2018 Total Households	4,193	40,051	103,683
2018 Daytime Population	10,797	105,915	292,850
2018 Average HH Income	\$51,776	\$67,215	\$73,342

## TRAFFIC COUNTS:

Perrin Beitel: 20,979 VPD

# 4230 NACO PERRIN BOULEVARD

SAN ANTONIO, TX | PERRIN BEITEL AND NACO PERRIN BOULEVARD



THE **retail** CONNECTION

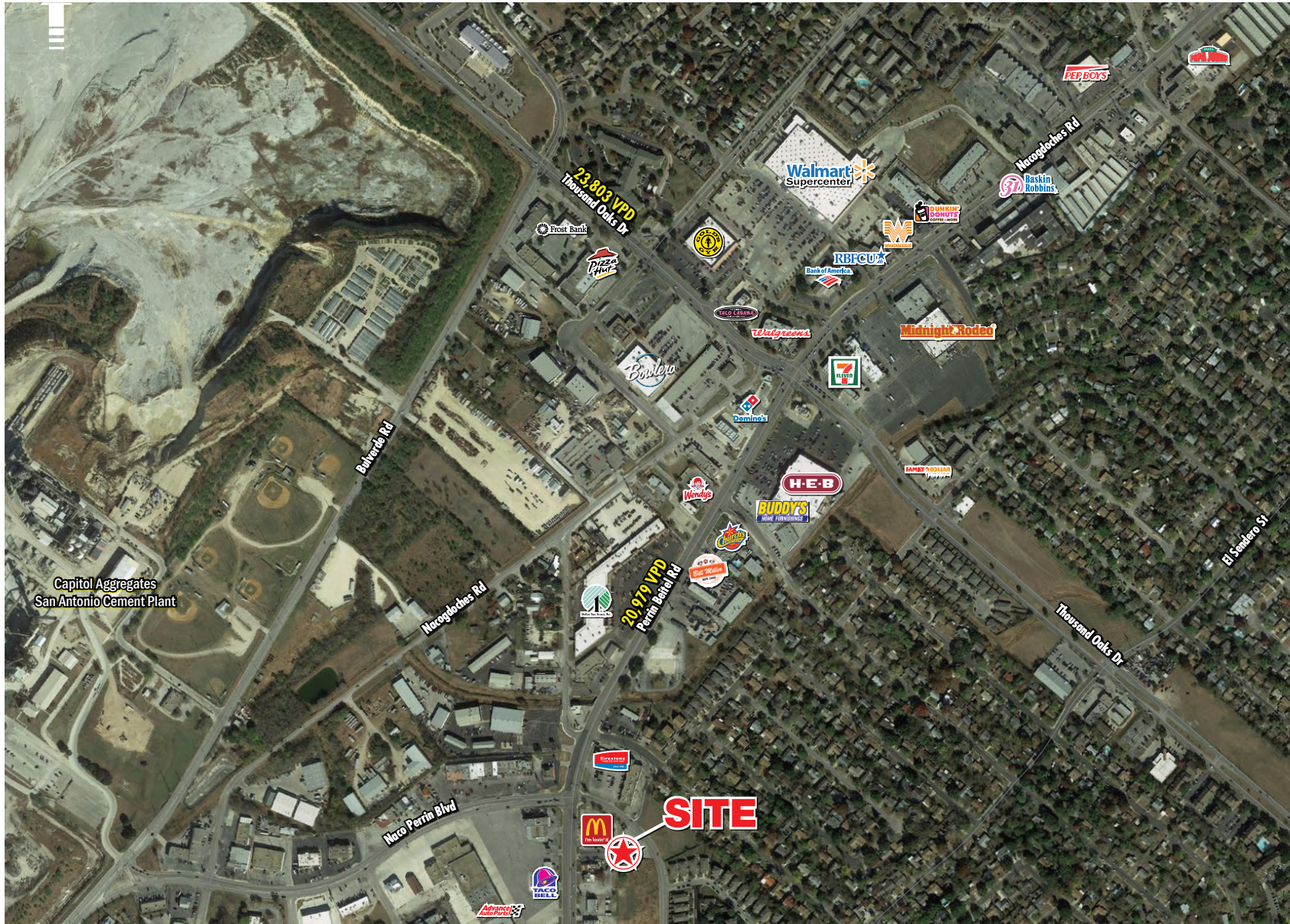
FOR MORE INFORMATION, PLEASE CONTACT:

**MATT SQUIRE**  
 210.536.2282  
 msquire@theretailconnection.net

**NICK ALTOMARE**  
 210.408.6468  
 naltomare@theretailconnection.net

# 4230 NACO PERRIN BOULEVARD

SAN ANTONIO, TX | PERRIN BEITEL AND NACO PERRIN BOULEVARD



THE **retail** CONNECTION

FOR MORE INFORMATION, PLEASE CONTACT:

**MATT SQUIRE**  
210.536.2282  
msquire@theretailconnection.net

**NICK ALTOMARE**  
210.408.6468  
naltomare@theretailconnection.net

# 4230 NACO PERRIN BOULEVARD

SAN ANTONIO, TX | PERRIN BEITEL AND NACO PERRIN BOULEVARD



THE **retail** CONNECTION

FOR MORE INFORMATION, PLEASE CONTACT:

**MATT SQUIRE**

210.536.2282

[msquire@theretailconnection.net](mailto:msquire@theretailconnection.net)

**NICK ALTOMARE**

210.408.6468

[naltomare@theretailconnection.net](mailto:naltomare@theretailconnection.net)

